

Charger Box

User Guide



FCC ID : DE-BC-001

IC : Complies to ICES-003 class B

DE-BC Charger Box



Version 25/03/2019

TABLE OF CONTENTS

1 - DESCRIPTION OF THE Charger Box

2 - LIST OF PROVIDED ACCESSORIES

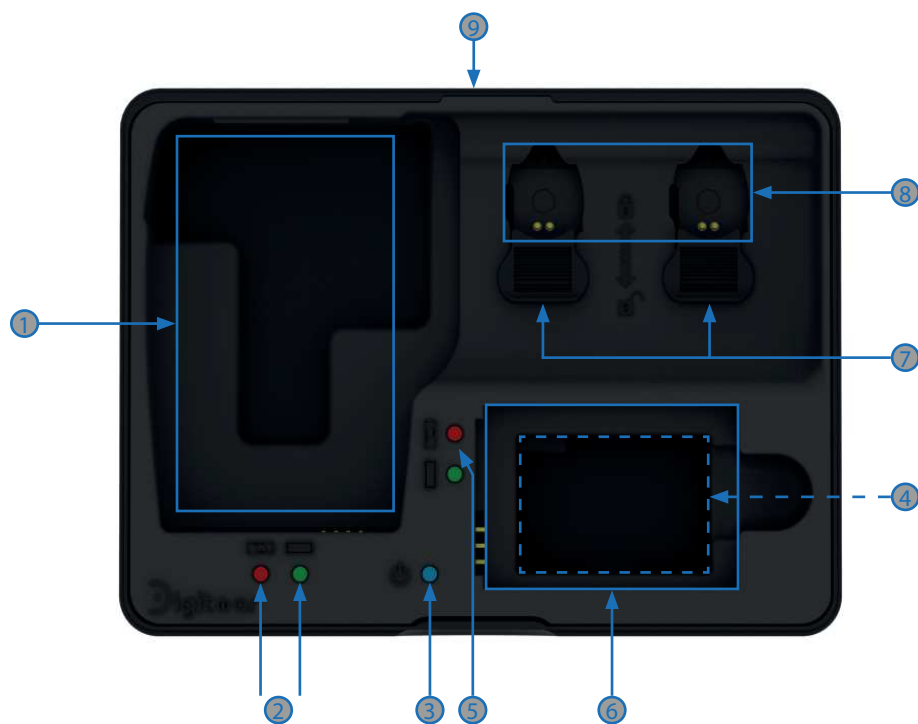
3 - SETTING UP THE Beltpack, THE In-Ear, AND THE SPARE BATTERY

4 - TECHNICAL FEATURES

5 - WARRANTY

6 - CERTIFICATIONS

1 - DESCRIPTION OF THE Charger Box



- ① Spot for transporting and charging of the Belt-pack.
- ② LED for Beltpack charge:
Red light on: Beltpack is charging.
Green light on: Beltpack is fully charge charged.
- ③ LED Power
The blue LED is on when the Charger box is powered by an external power supply.
- ④ Storage for replacement ear tips.
- ⑤ LED for spare battery charge:
Red light on: Beltpack is charging.
Green light on: Beltpack is fully charged.
- ⑥ Spot for charging the Beltpack's spare battery. This battery enables the recharging of the ear-pieces while in nomad mode.
- ⑦ Locking-in the In-Ear.
Assures the maintenance and the electrical contacts for charging.
- ⑧ Charging spot for the In-Ear.
- ⑨ Mini USB
Connector for outside power source.

2 - LIST OF PROVIDED ACCESSORIES



Mini charger USB 5V-1A

Ref. : VER05US050-MB



Beltpack's spare battery
3,7V-1200 mAh

Ref. : BL - 5C

3 - SETTING UP THE Beltpack, THE In-Ear AND THE SPARE BATTERY



The Charger Box enables the charge of a complete set of wireless receivers: a Beltpack, two In-Ear earpieces, and a spare battery for the Beltpack.

The charge occurs preferably with the provided wall adapter.

The Charger Box has a «nomad» mode allowing the recharging of the earpieces with the spare battery and without the wall adapter.

The Charger Box can be closed thanks to its cover permitting storage and easy transportation.

4 - TECHNICAL FEATURES

Charger Box

Voltage (DC)	5 V
Current	1 A
Power supply	Mini USB Charger XP Power Ref : VER05US050-MB
Conditions of use (security from overheat)	Input 100 - 240V ~ 50/60 Hz 0,18A, Output 5V = 1A max +5 °C to +45 °C

Recharge In-Ear

Charge voltage (DC)	4,2V
Charge current	< 50 mA
Time needed for a complete charge	~2 h

Recharge spare battery Beltpack

Charge voltage (DC)	4,2V
Charge current	< 0,5 A
Time needed for a complete charge	~3 h
Number of charging cycles for InEar while in Nomad mode	~10 fois

Recharge Beltpack

Charge voltage (DC)	4,2V
Charge current	< 0,5 A
Time needed for a complete charge	~3 h

5 - WARRANTY

Elements NOT covered by the warranty

This warranty only covers faulty parts and the manufacturing of the product. This warranty does not cover :

- Periodical maintenance and reparations or replacements of parts due to normal wear and tear
- Shipping and handling costs and the risks associated with the transportation and the retrieval of the product by the final customer
- All adaptations of the product which would be necessary to make it comply with the technical and/ or security standards in a country other than the one for which the product was originally designed and manufactured for
- Consumable elements: elements that are scheduled to be replaced periodically during the life of the equipment (for example: ear tips, batteries over 12 months after the purchase date, and connection cables)

The deteriorations or defects of the product resulting in:

- A poor usage or installation of the product (for example: using the product in a way not intended, installation or usage not standard to **Digitear**'s instructions and to the technical standards or security in the country where it is used)
- Maintenance of the product non-compliant to Overline Systems' instructions or negligence in maintenance of the product
- Any mishandling of the product (ex: false manoeuvre, fall, shock, impact, immersion) or an inappropriate environment (ex: bad aeration, vibrations, exposure to humidity or excessive heat, contacts with a product (material or software), consumable, accessory or device non compatible or defective, an adaptation of the product towards its end of being put to conformity with technical or security standards in a country other than the one the product was originally designed and manufactured for
- A modification or a reparation of a product not made by a third party approved by Overline Systems
- Sinister (ex: fire, flood, earthquake, lightning)

Produit: **Digitear** (TX-Box, Charger Box, Beltpack, In-Ear)

24 months pieces or workshop labor

Battery: 12 months (starting the purchase date)

ACCESS POINT: covered by the manufacturer's initial warranty

Accessories alone will not be taken in by our reparation centers.

6 - CERTIFICATIONS

Produit destiné à une utilisation en intérieur.

This product is for indoor use only.

Tout changement ou modification apporté à cet équipement non expressément approuvé par OVERLINE Systems peut annuler l'autorisation d'utiliser cet équipement.

Any changes or modifications made to this equipment not expressly approved by OVERLINE Systems may void the authorization to operate this equipment.

Item : DE-BC Charger Box

Type identification : DE-BC-001

PMN : Digitear

CE

L'équipement est conforme aux exigences suivantes :

This product complies to the following requirements :

Sécurité :

IEC 62368-1: 2014 (2.Edition) and Cor. 1: 2015

EN 62368-1: 2014/AC: 2015/A11: 2017

Compatibilité électromagnétique :

ETSI EN 301 489-1 V2.2.0 (DRAFT)

EN 55024:2010

EN 55032:2015

DoC disponible sur www.digitear.eu

DoC available : www.digitear.eu

FCC/IC

L'équipement est conforme aux exigences suivantes :

This product complies to the following requirements :

47 CFR Part 15:2016

ICES-003, Issue 6:2016

ANSI C63.4:2014

Equipment classification : Equipment for fixed use

Environnement classification : Residential, commercial and light industry

Ce produit est conforme aux spécifications de la réglementation ICES-003 classe B du Canada.

NOTE : This equipment has been tested and found to comply with the limits for a Class B digital device, pursuant to Part 15 of the FCC Rules. These limits are designed to provide reasonable protection against harmful interference in a residential installation. This equipment generates, uses and can radiate radio frequency energy and, if not installed and used in accordance with the instructions, may cause harmful interference to radio communications. However, there is no guarantee that interference will not occur in a particular installation. If this equipment does cause harmful interference to radio or television reception, which can be determined by turning the equipment off and on, the user is encouraged to try to correct the interference by one or more of the following measures :

- Reorient or relocate the receiving antenna.
- Increase the separation between the equipment and receiver.
- Connect the equipment into an outlet on a circuit different from that to which the receiver is connected.
- Consult the dealer or an experienced radio/TV technician for help.